

CHAPTER 1

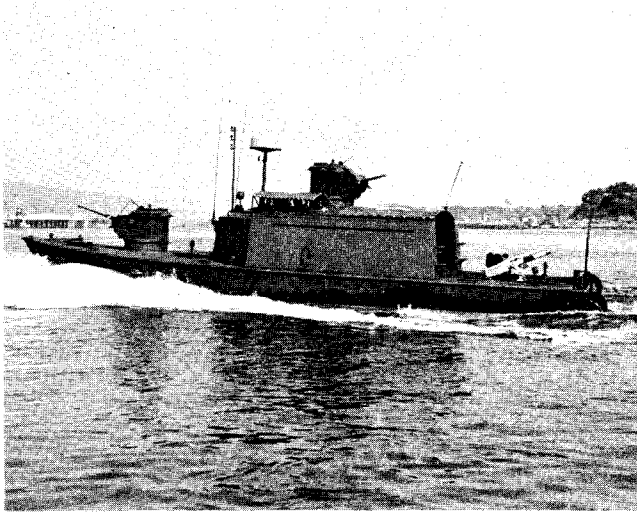
LANDING CRAFT

This chapter includes those boats specifically designated as Landing Craft, and certain other craft that are mission oriented to landing operations. The ASPB, ATC, CCB, and Monitor are units of the Riverine Assault Force (RAF). The Refueller, also a unit of the RAF concept has not been listed because of the limited number that are in use, and because it is essentially identical to the ATC, except for a fuel bladder and fuel transfer accessories. The ATC, CCB, Monitor and Refueller are LCM-6 conversions.

CONFIDENTIAL  
NOLTR 66-25

ASPB Data

L.O.A.	50.1'
Beam	15.2'
Draft	3.8' (full load)
Displ.	70,000 lb. (full load)
Drive	Diesel (2) (400 hp ea) (Inbd. heat exchanger)
Hull Mat	Steel
Complement	5
Cruising Rad	
Max Speed	( load) 15 kn.
Pers Transp Cap	
Cargo Transp Cap	4685 lb.



ASSAULT SUPPORT PATROL BOAT (ASPB)

Mission (Tasks):

To permit high-speed patrol of hostile, shallow, river mouths and shore lines, and escort of Riverine Assault Force Vessels. Also to permit rapid deployment of small assault teams, and provide limited gunfire and mortar support for forces ashore.

Armament:

- 1 - Mount, Mortar (81MM Mk 1 Mod 0) Mk 2 Mod 0
- 1- Mount, Mach. Gun (20MM M3 and 40MM Gren. Mk 19 Mod 0) Mk 48 Mod 0
- 1 - Mount, Mach. Gun (Twin 7.62MM M1919A4 Converted, and 40MM Gren. Mk 19 Mod 0) Mk 48 Mod 1
- 2 - Mount, Mach. Gun (40MM Gren. Mk 18 Mod 0) Mk 55 Mod 0, with 4 stands, 2 fwd, and 2 aft.

Status:

Remarks:

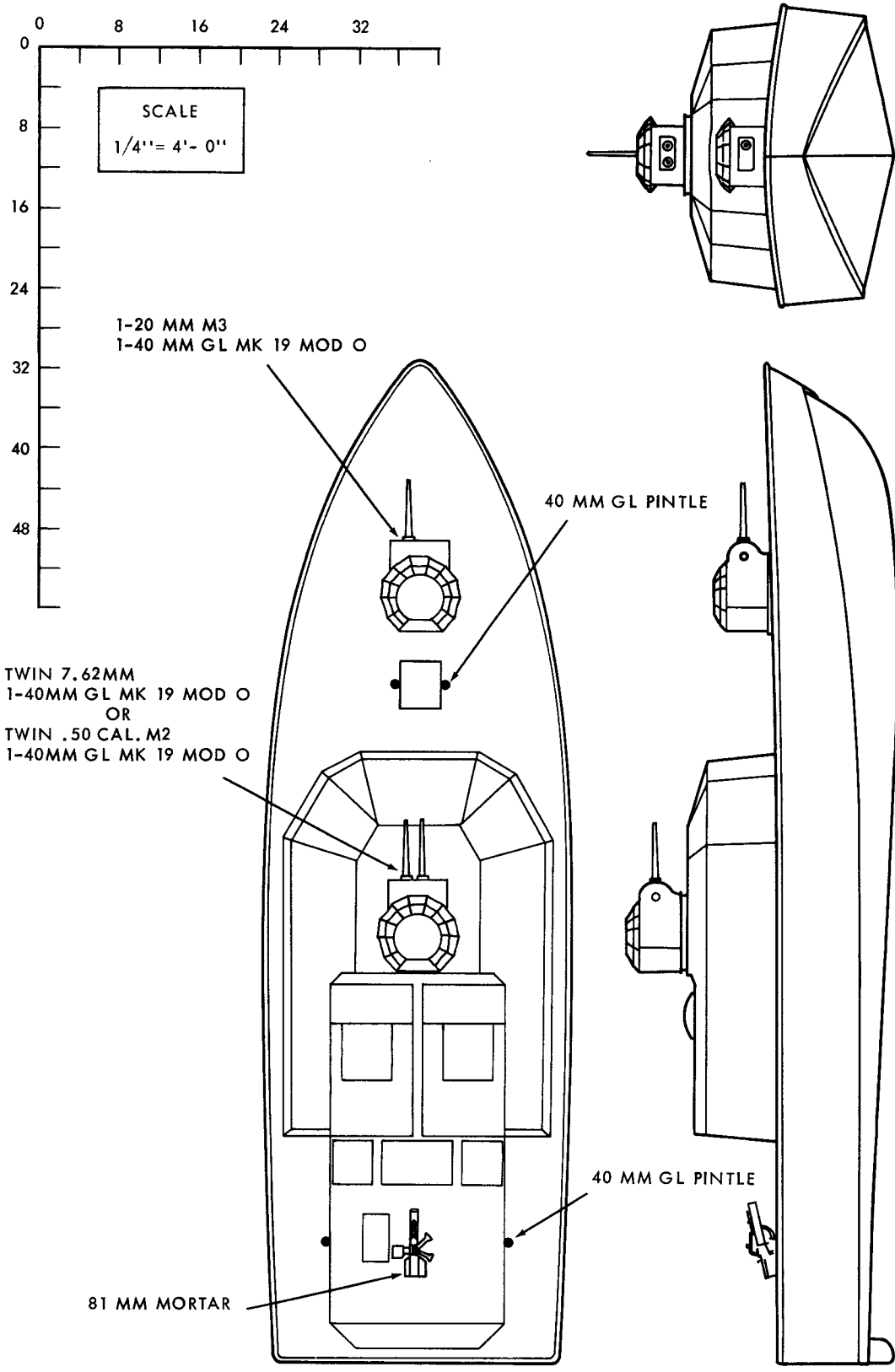
36 hulls are being put in service (11-7-67). 40MM G. L. Mk 19 to be installed when available.

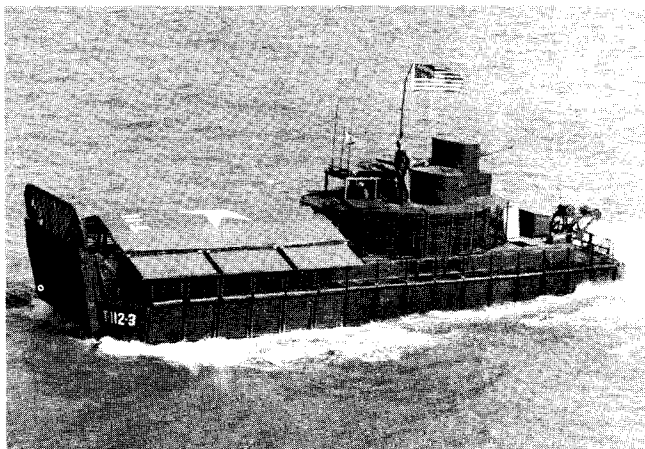
Armor:

To defeat .50 AP at all gun stations and at the pilot house. Protection against 57 MM HEAT rounds at the pilot house and engine room.

Reference:

NAVORD OD 37867 (Weapon Equipment List) (First Revision 1-27-67)





	ATC Data
L.O.A.	56'
Beam	17'
Draft	4' (full load)
Displ.	155,000 lb. (full load)
Drive	Diesel (2) (225 hp ea)
Hull Mat	Steel
Complement	7
Cruising Rad	160nm at 8.5 kn
Max Speed	(full load) 8.5 kn
Pers Transp Cap	40 Troops & Equip.
Cargo Transp Cap	24,000 lb.

ARMORED TROOP CARRIER (ATC)

Mission (Tasks):

To function as the general purpose carrier of the river assault squadron.

Armament:

- 1 - Mount, Mach. Gun (20MM Mk 16 Mod 3) Mk 51 Mod 0
- 2 - Mount, Mach. Gun (.50 Cal. M2, HB and 40MM Gren. Mk 18 Mod 0)  
Mk 50 Mod 0
- 4 - Mount, Mach. Gun (7.62MM M1919A4 Converted) Mk 26 Mod 1

Status:

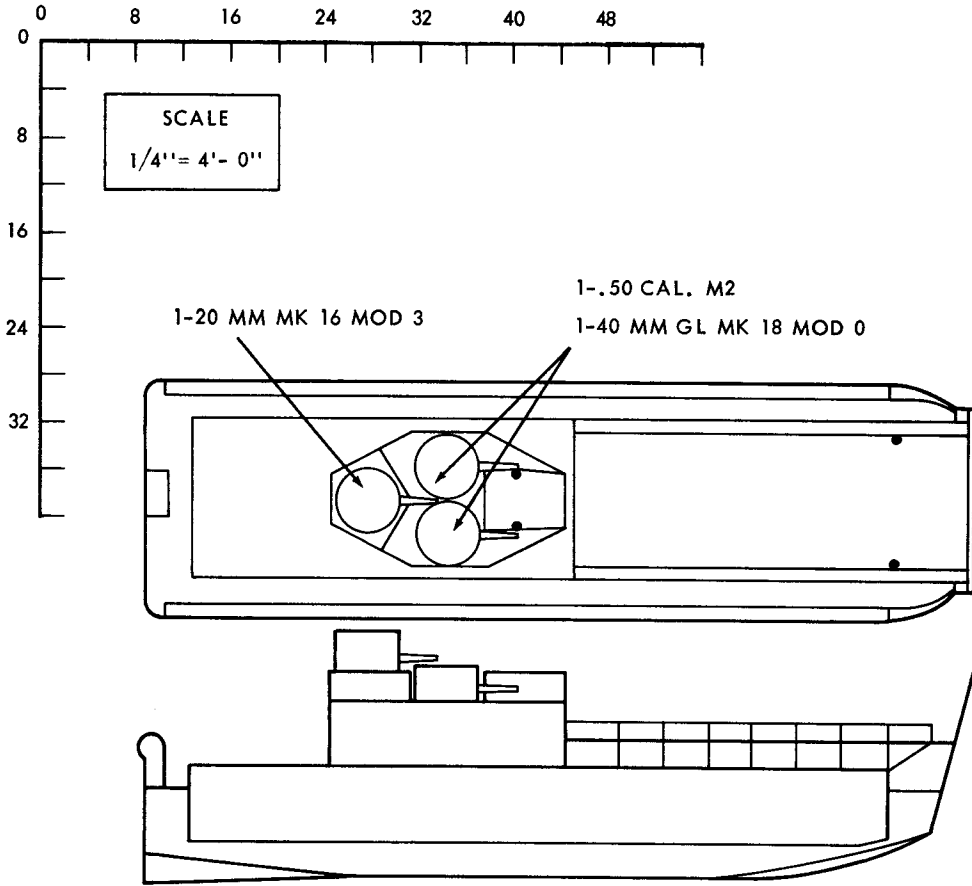
Remarks:

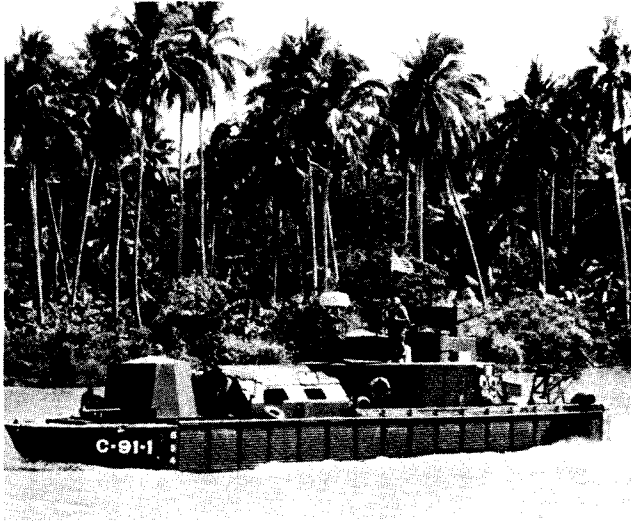
Armor:

Against .50 MG fire. Hull sides and pilot house protected against 57 mm HEAT rounds.

Reference:

NAVORD OD 37849 (Weapon Equipment List) (First Rev. 1-27-67)





CCB Data

L.O.A.	61'
Beam	17'
Draft	4' (full load)
Displ.	167,000 lb. (full load)
Drive	Diesel (2) (225 hp ea)
Hull Mat	Steel
Complement	11
Cruising Rad	160nm at 8.5kn
Max Speed	8.5kn (full load)
Pers Transp Cap	
Cargo Transp Cap	

COMMAND AND COMMUNICATION BOAT (CCB)

Mission (Tasks):

To provide command facilities for river assault squadron and ground force commanders.

Armament:

- 1 - Mount, Mach. Gun (40MM M1 and .50 Cal. M2, HB) Mk 52 Mod 0
- 1 - Mount, Mach. Gun (20MM Mk 16 Mod 3) Mk 51 Mod 0
- 2 - Mount, Mach. Gun (.50 Cal. M2, HB and 40 MM Gren. Mk 18 Mod 0)  
Mk 50 Mod 0
- 2 - Mount, Mach. Gun (7.62MM M1919A4 Converted) Mk 26 Mod 1

Status:

Remarks:

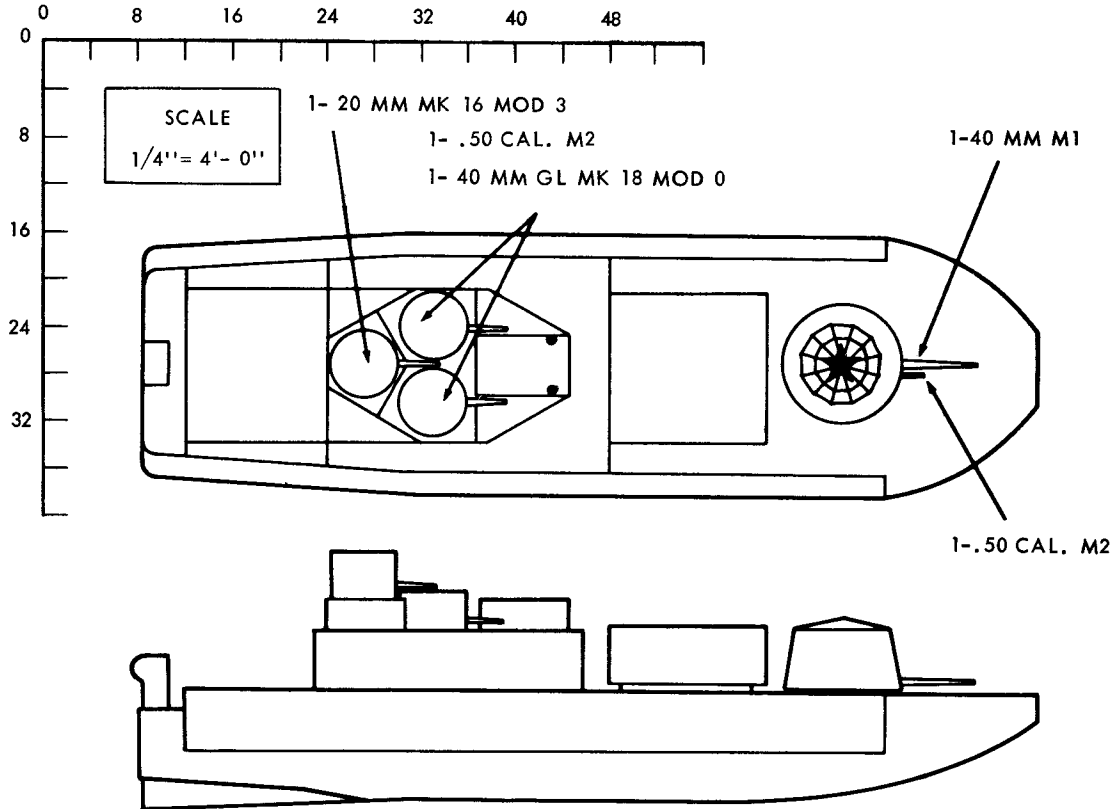
Capacity for 1100 additional gallons of fuel provided in bottom voids.

Armor:

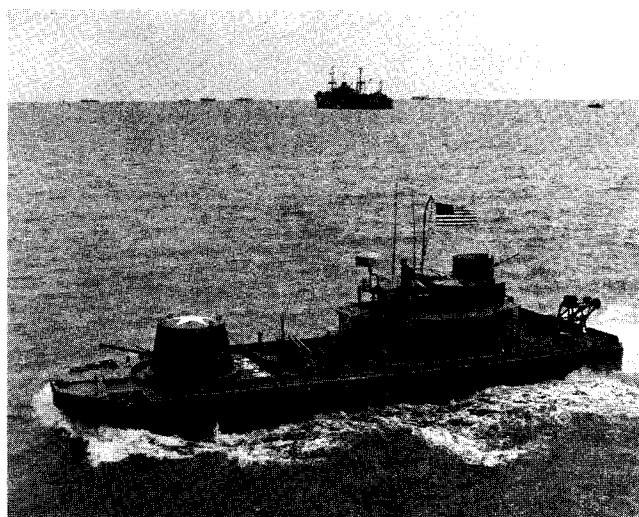
Against .50 MG fire. Hull sides and pilot house protected against 57mm HEAT rounds.

Reference:

NAVORD OD 38291 (Weapon Equipment List) (First Rev. 1-27-67)



Monitor Data



L.O.A.	61'
Beam	17'
Draft	4' (full load)
Displ.	169,000 lb. (full load)
Drive	Diesel (2) (225 hp ea)
Hull Mat	Steel
Complement	11
Cruising Rad	160 nm at 8.5 kn.
Max Speed	8.5 kn. (full load)
Pers Transp Cap	
Cargo Transp Cap	

Monitor

Mission (Tasks):

To provide fire support for the river assault squadron during water movements and ground operations.

Armament:

- 1 - Mount, Mach. Gun (40MM M1 and .50 Cal. M2, HB) Mk 52 Mod 0
- 1 - Mount, Mach. Gun (20MM Mk 16 Mod 3) Mk 51 Mod 0
- 2 - Mount, Mach. Gun (.50 Cal. M2, HB and 40MM Gren. Mk 18 Mod 0)  
Mk 50 Mod 0
- 1 - Mount, Mortar (81MM Mk 1 Mod 0) Mk 2 Mod 0
- 4 - Mount, Mach. Gun (7.62MM M1919A4 Converted) Mk 26 Mod 1

Status:

Remarks:

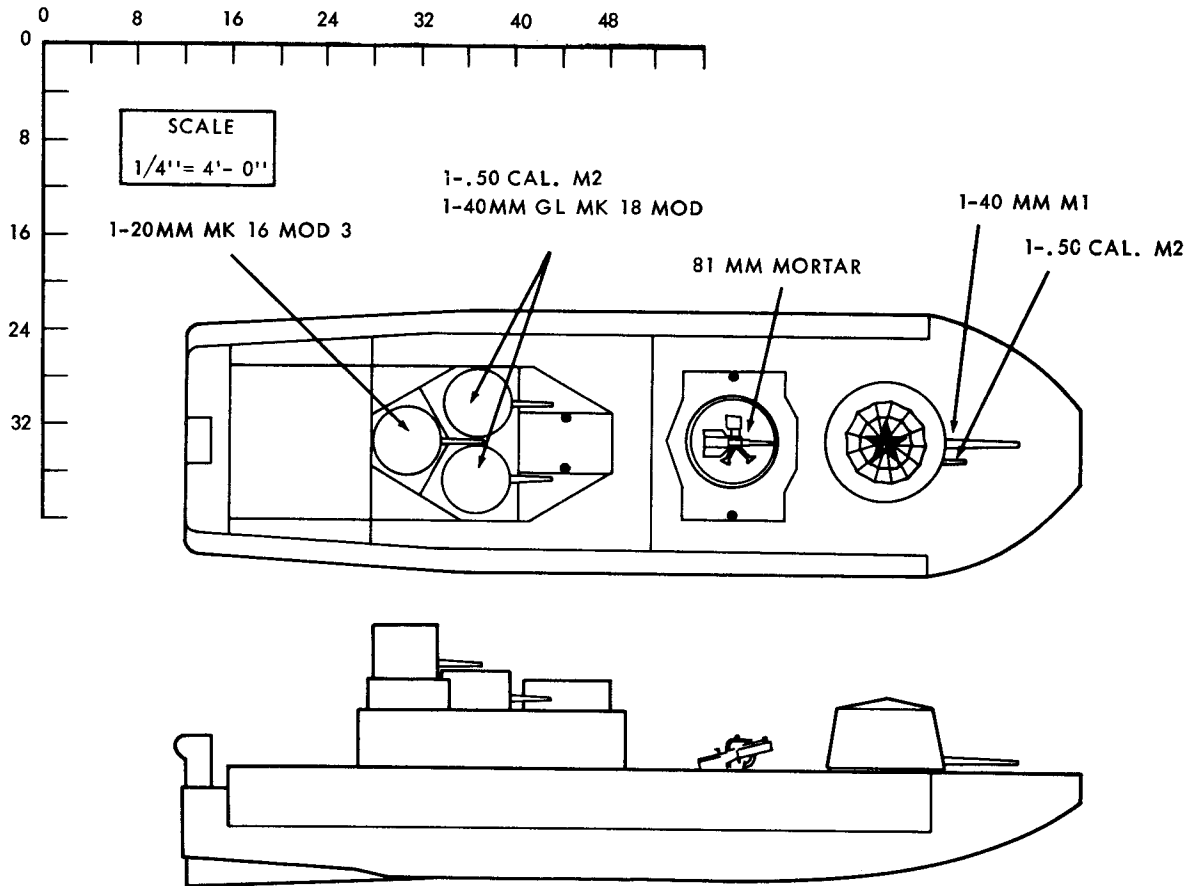
Armor:

Complete against .50 MG fire. Hull sides and pilot house protected against 57 mm HEAT rounds.

Reference:

NAVORD OD 38293 (Weapon Equipment List) (First Revision, 1-27-67)





LCM(3) Data

L.O.A.	50'
Beam	14'
Draft	4.6' (full load)
Displ.	112,000 lb. (full load)
Drive	Diesel (2) (225hp ea)
Hull Mat	Steel
Complement	5
Cruising Rad	130nm at 9.5kn
Max Speed	9.5kn (full load)
Pers Transp Cap	100 Troops & Equip.
Cargo Transp Cap	60,000 lb.



LANDING CRAFT, MECHANIZED LCM(3)

Mission (Tasks):

To land medium-weight vehicles, equipment, personnel, and/or cargo on the beach in an amphibious assault.

Armament:

A Weapon Equipment List has not been promulgated by the Naval Ordnance Systems Command for the LCM(3). However, the following armament has been selected for this craft as modified for riverine or inshore warfare:

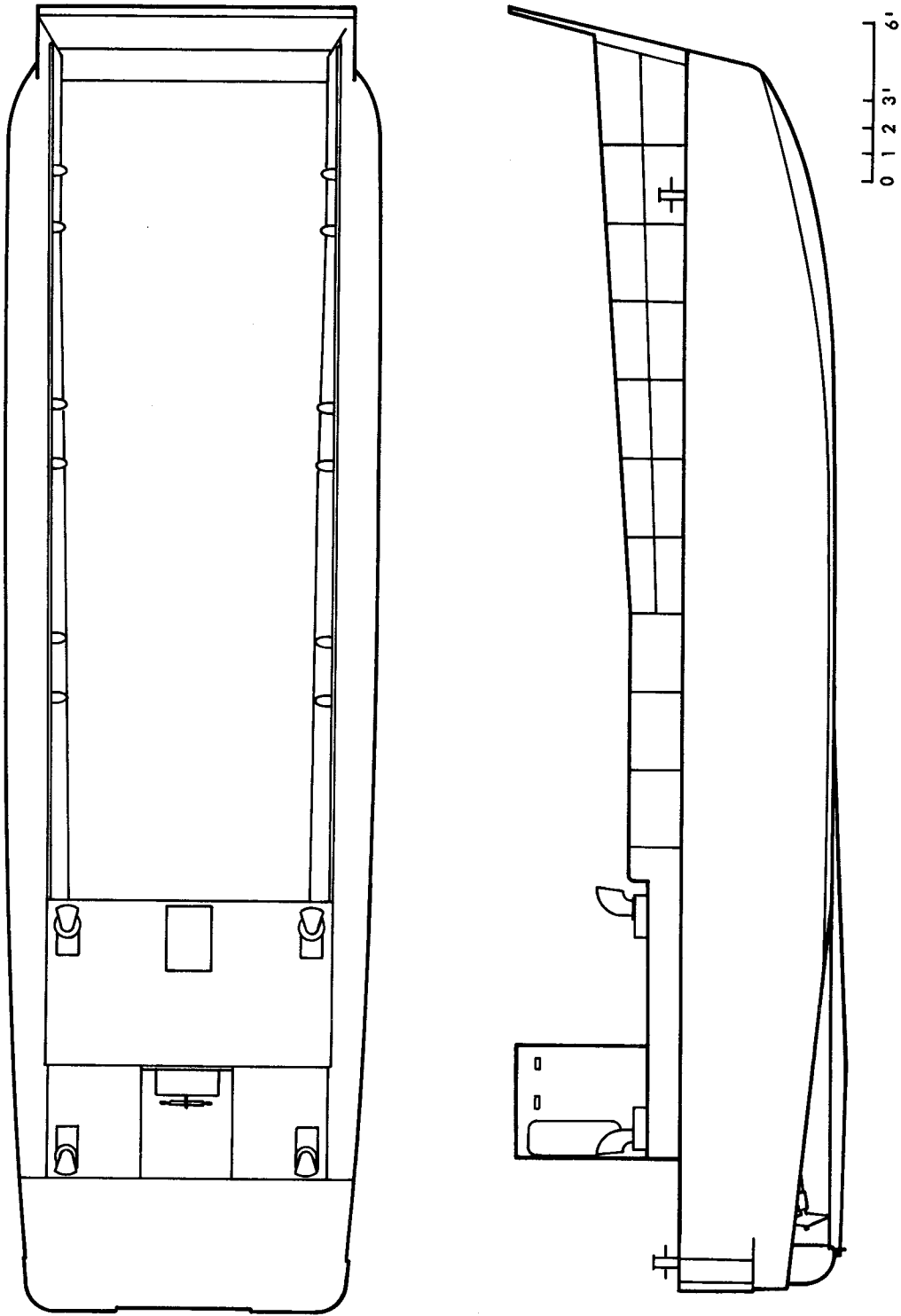
2 - Mount, Mach. Gun (.50 Cal. M2)

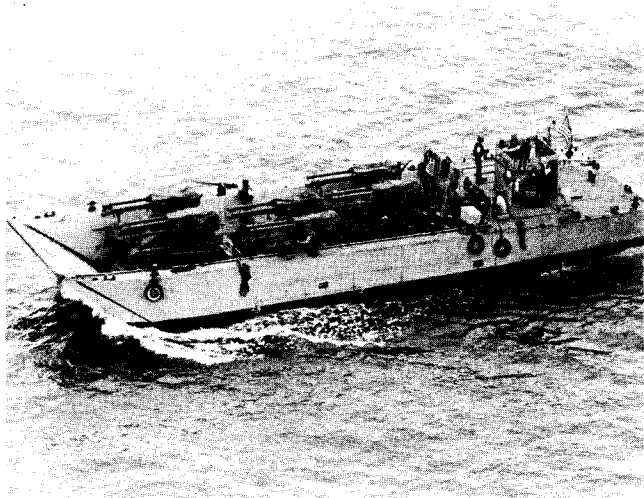
1 - Mount, Mortar (81MM Mk 1 Mod 0)

Status:

Remarks:

LCM(3)s have largely been replaced by LCM(6)s and LCM(8)s (11-7-67). Some APA can carry only LCM(3) and LCM(6); an LCM(8) will overhang the ship sides in stowed position if beam is less than 74 feet.





LCM (8) Data	
L.O.A.	73.6'
Beam	21'
Draft	5.2' (full load)
Displ.	254,000 lb. (full load)
Drive	Diesel (2) (325 hp ea)
Hull Mat	Steel
Complement	5
Cruising Rad	190 nm at 9 kn
Max Speed	9 kn (full load)
Pers Transp Cap	200 Troops & Equip.
Cargo Transp Cap	120,000 lb.

LANDING CRAFT, MECHANIZED LCM (8)

Mission (Tasks):

To land heavy vehicles, equipment, personnel, and/or cargo on the beach in an amphibious assault.

Armament:

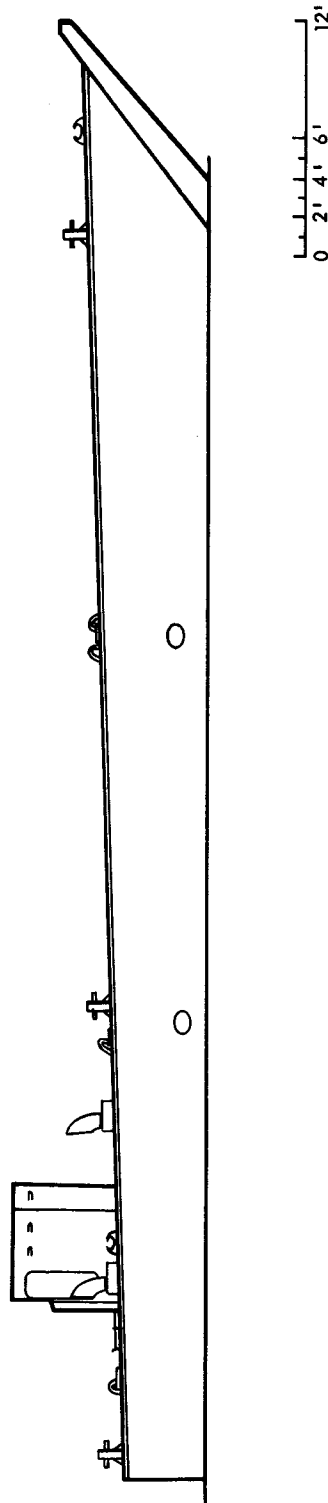
2 - .50 Cal. Mach. Gun foundations are provided in the hull. A Weapon Equipment List has not been promulgated by the Naval Ordnance Systems Command for LCM (8). However, the following armament has been selected for this craft as modified for riverine or inshore warfare:

1 - Mount, Mortar (81MM Mk 1 Mod 0)

Status:

Remarks:

Above information applies only to LCM 8 Mod 1. LCM 8 Mod 2 has aluminium hull - no additional information available.



CONFIDENTIAL

NOLTR 66-25



LCVP Mk 7 Data

L.O.A.	35.6'
Beam	10.5'
Draft	3.5' (full load)
Displ.	26,000 lb. (full load)
Drive	Diesel (1) (225 hp)
Hull Mat	Plastic
Complement	3
Cruising Rad	110 nm at 8 kn.
Max Speed	8 kn. (full load)
Pers Transp Cap	36 Troops & Equip.
Cargo Transp Cap	8100 lb.

LANDING CRAFT, VEHICLE, PERSONNEL (LCVP) Mk 7

Mission (Tasks):

To land personnel light vehicles, equipment, and/or cargo on the beach in an amphibious assault.

Armament:

A Weapon Equipment List has not been promulgated by the Naval Ordnance Systems Command for LCVP Mk 7. However, the following armament has been utilized with this craft as modified for riverine or inshore warfare:

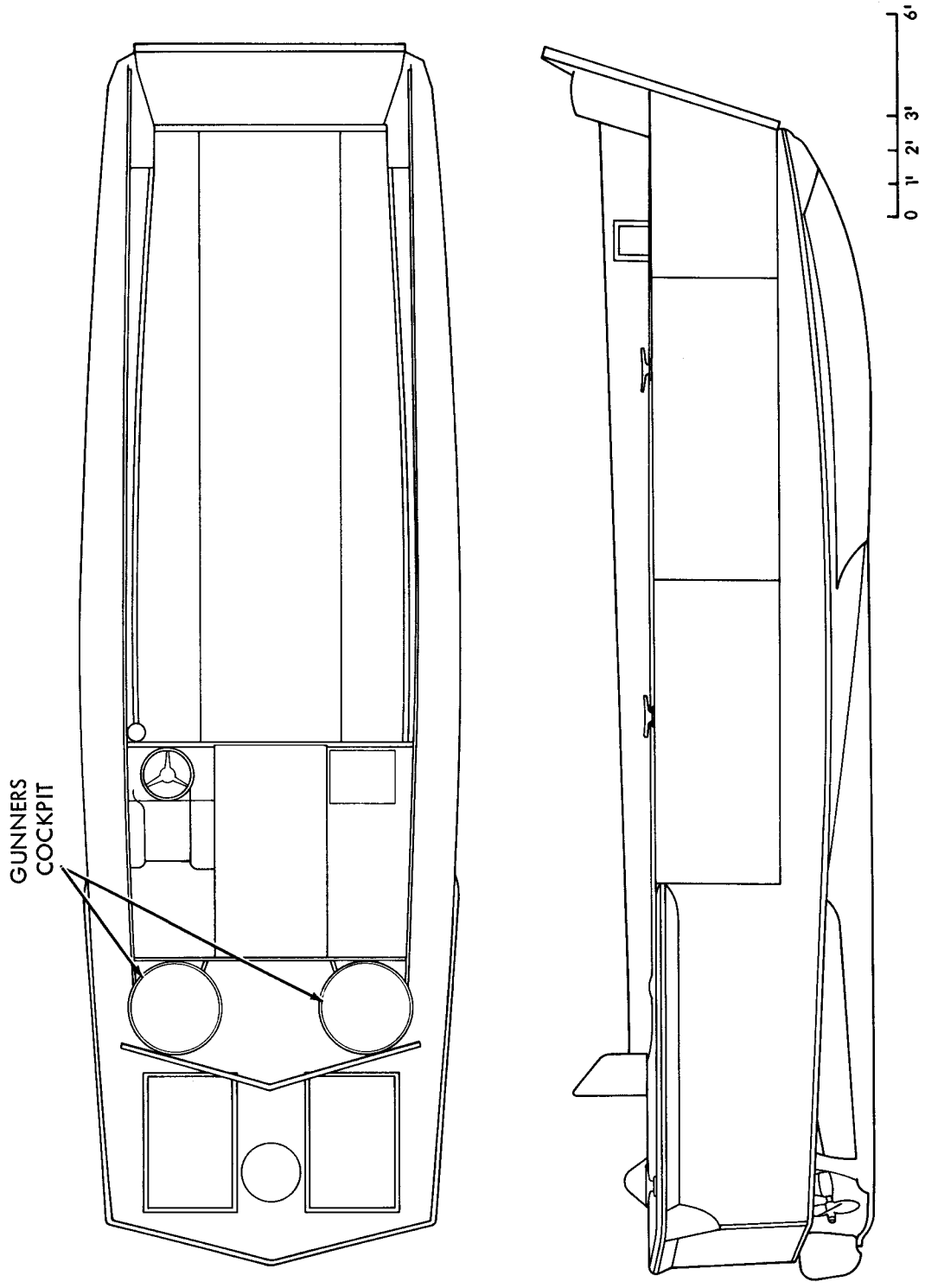
2 - Mount, Mach. Gun (.30 Cal. M1919)

Status:

Remarks:

Armor:

Protects cargo well.



CHAPTER 2

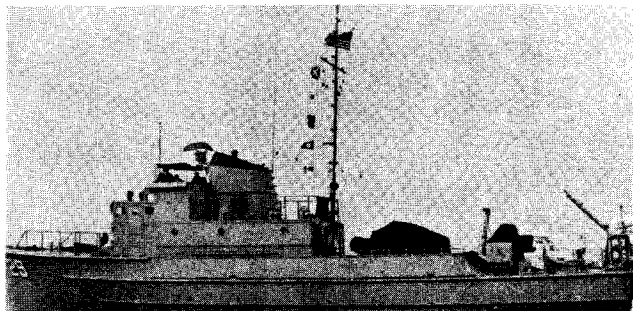
MINESWEEPERS

This chapter is restricted to those craft designated as Minesweepers. The armament and armor information carried in the chapter is subject to even more variation than that listed in other chapters. When sweeping magnetic mines, practically all armor and armament may be left ashore. The normal complement of armor and armament may be carried when sweeping other types of mines. When doing work close inshore, or sweeping for controlled mines, extra arms and armor may be carried. On many occasions the minesweep will simply be used to provide a sturdy hull and crew for missions bearing no relation to sweeping, and the arms and armor will be selected for the task at hand.



MSB 29 Data

L.O.A. 82'  
Beam 19'  
Draft 5.5' (full load)  
Displ. 81 Ton (full load)  
Drive Diesel (2) (300 hp ea)  
Hull Mat  
Complement 10  
Cruising Rad  
Max Speed 11.7 kn (full load)  
          (6.5 kn towing sweep)  
Pers Transp Cap  
Cargo Transp Cap



MINESWEEPING BOAT (MSB 29)

Mission (Tasks):

To sweep sea mines in shallow waters, of less than 5 fathoms.  
(Requires logistics by shore or MSC)

Armament:

A Weapon Equipment List has not been promulgated by the Naval Ordnance Systems Command for MSB 29. However, the following armament has been selected for this craft as modified for riverine or inshore warfare:

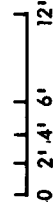
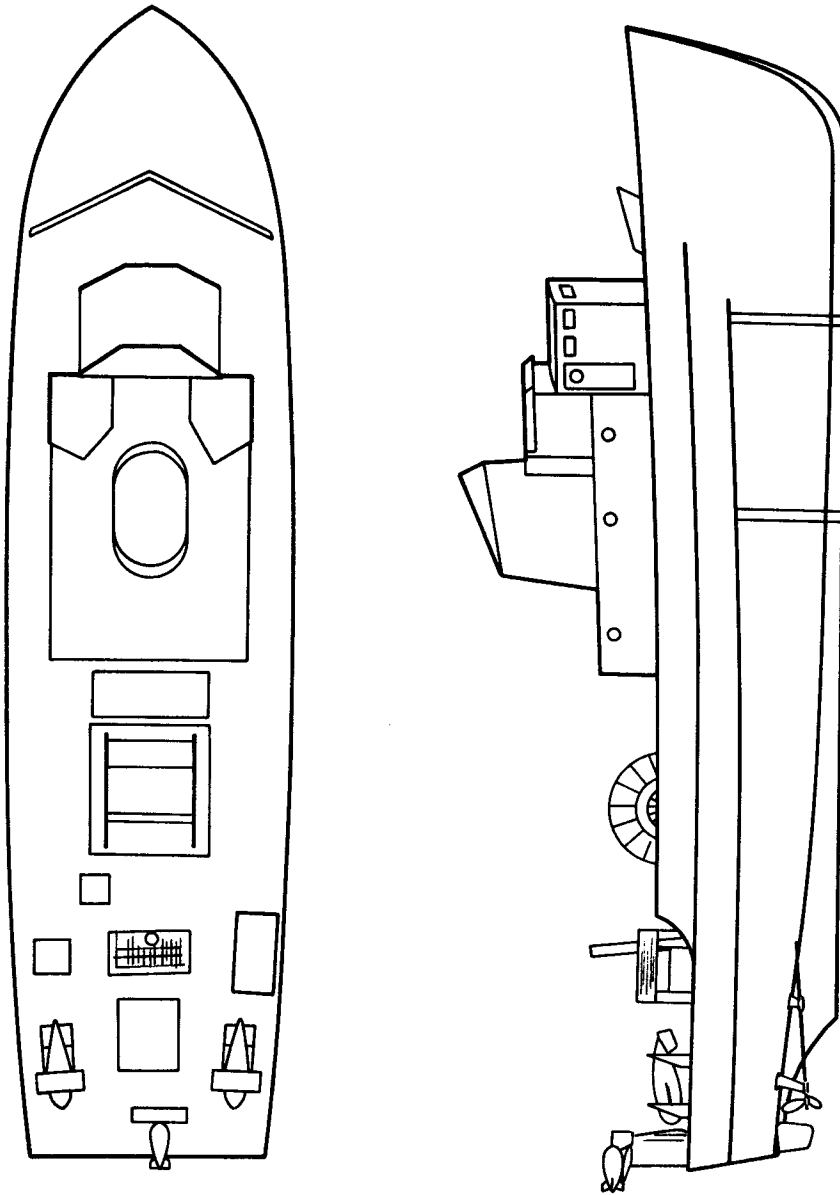
- 1 - Mount, Mach. Gun (.50 Cal. M2)
- 4 - Mount, Mach. Gun (.30 Cal. M1919A4)

Status:

Remarks:

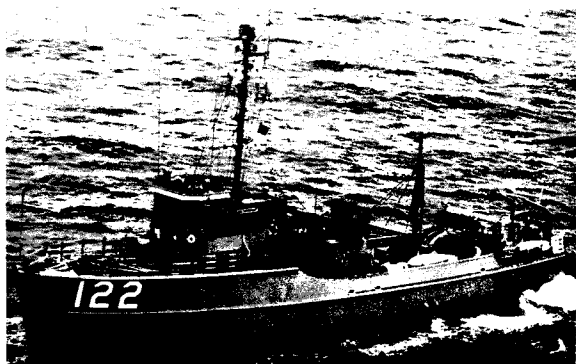
Armor:

None



MSC 121 Class Data

L.O.A.	144'
Beam	28'
Draft	10.5' (full load)
Displ.	360 Ton (full load)
Drive	Diesel (1200 hp)
Hull Mat	Wood
Complement	39
Cruising Rad	1300 nm at 13.5 kn 2200 nm at 10 kn
Max Speed	14 kn (load)
Pers Transp	Cap
Cargo Transp	Cap



MINESWEEPERS, COASTAL (MSC 121 Class)

Mission (Tasks):

To sweep sea mines

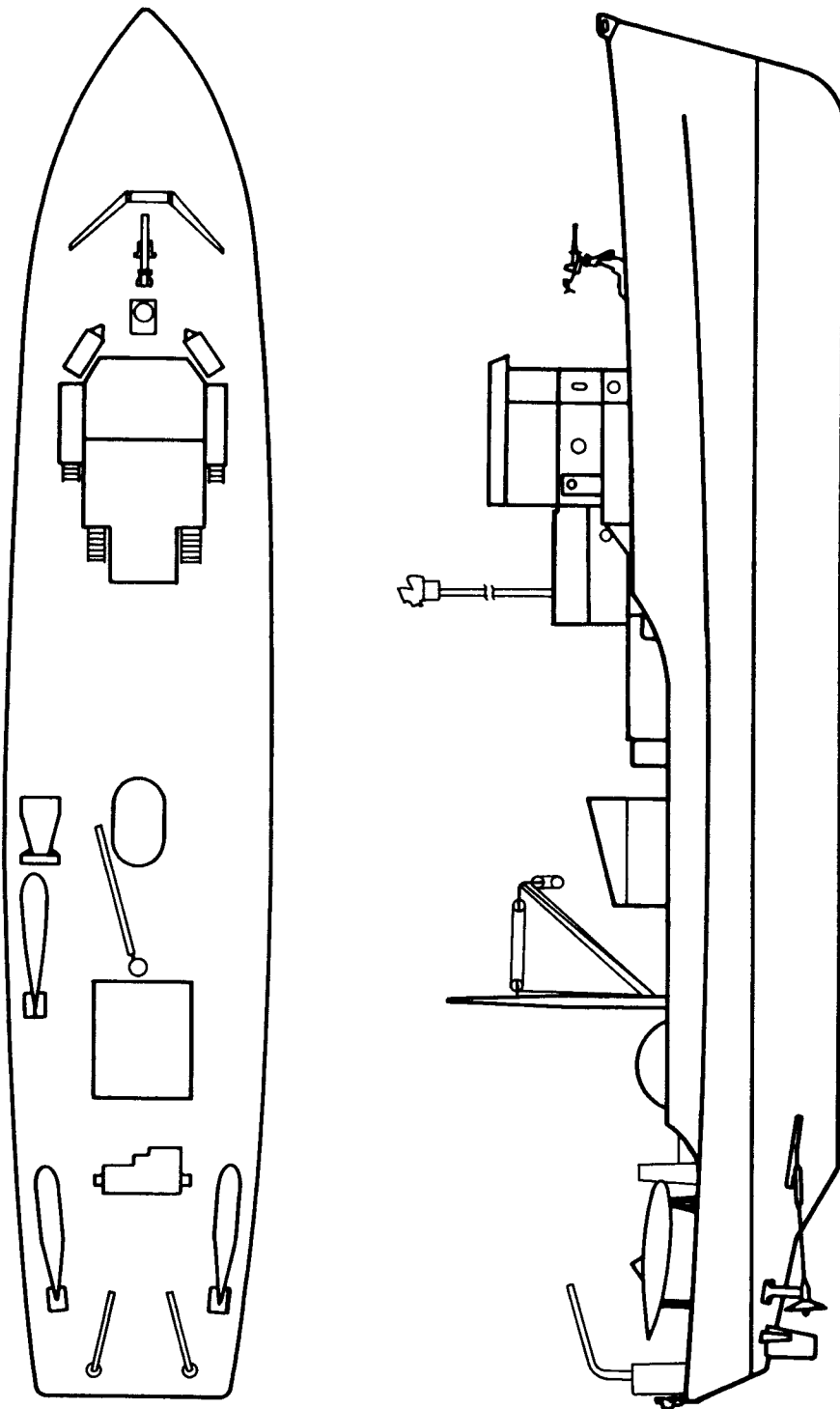
Armament:

1 - Mount, Mach. Gun (Twin 20MM Mk 4 Mod 1) Mk 24 Mod 6

Status:

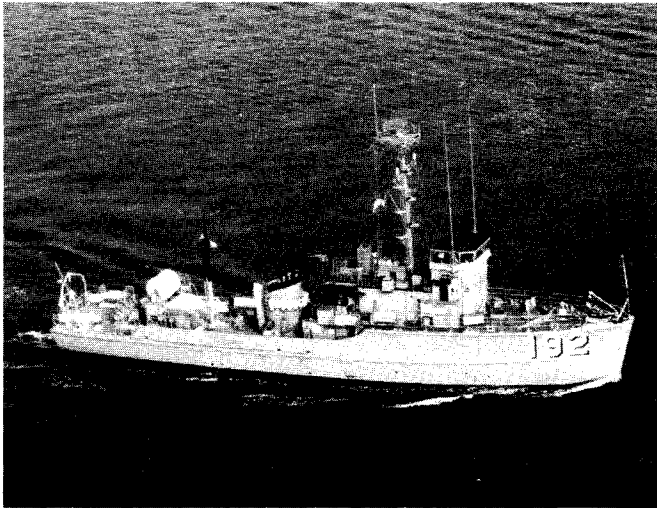
Remarks:

Reference: NAVORD OD 7947 (Weapon Equipment List)



0 5' 10'

MSC 190 Class Data



L.O.A	144'
Beam	28'
Draft	10.0' (full load)
Displ.	362 Ton (full load)
Drive	Diesel (2) (600 hp ea)
Hull Mat	Wood
Complement	39
Cruising Rad	3041 nm at 12 kn 4472 nm at 6 kn
Max Speed	13.6 kn ( load)
Pers Transp	Cap
Cargo Transp	Cap

MINESWEEPERS, COASTAL (MSC 190 Class)

Mission (Tasks):

To sweep sea mines

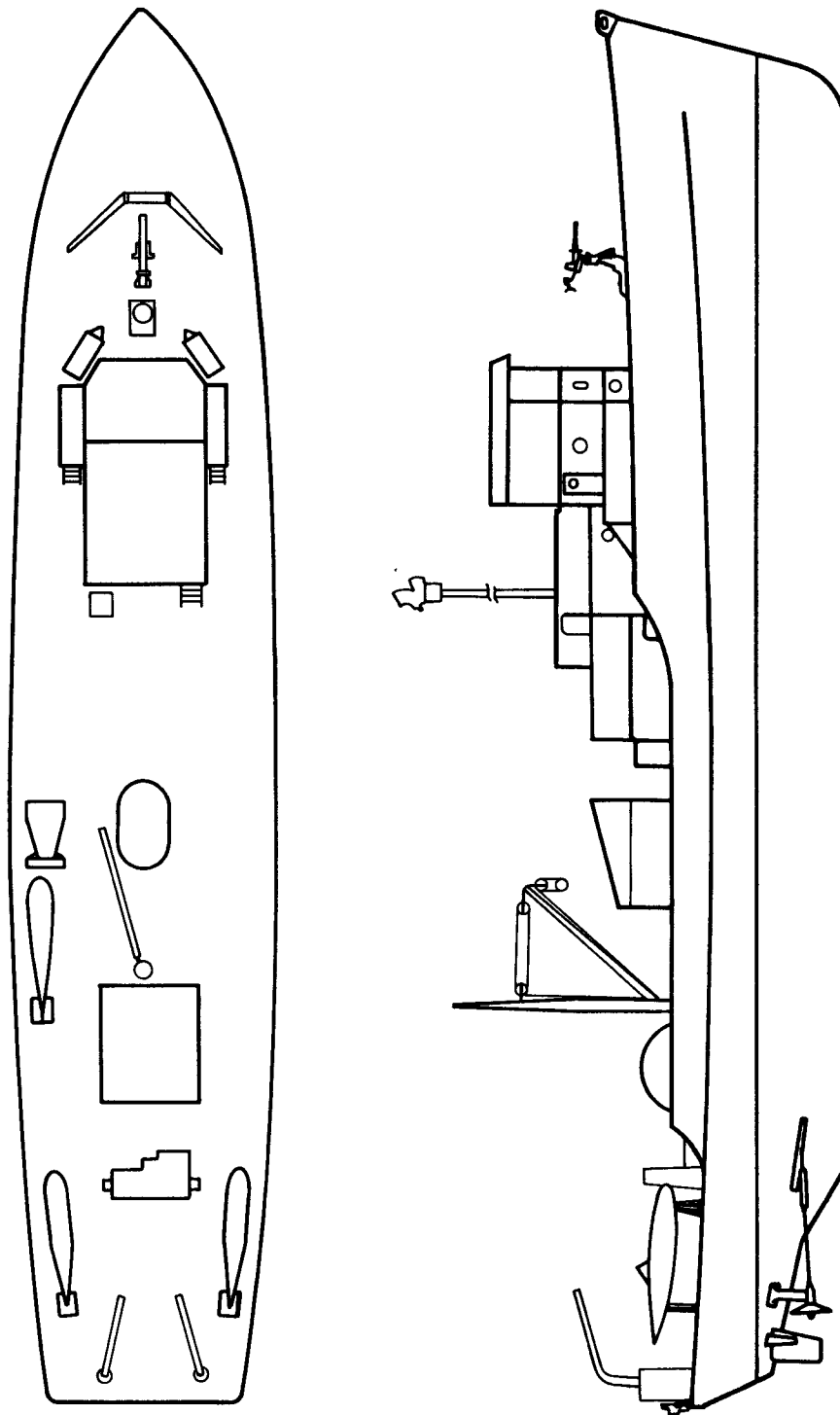
Armament:

1 - Mount, Mach. Gun (Twin 20MM Mk 4 Mod 1) Mk 24 Mod 6

Status:

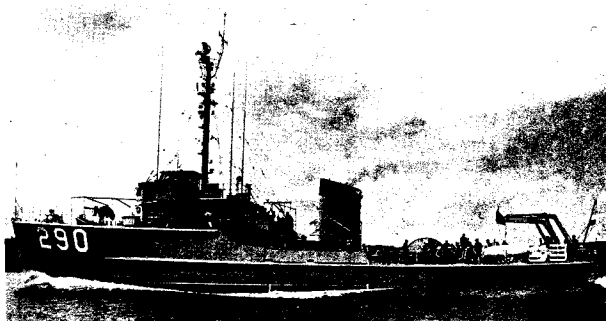
Remarks:

Reference: NAVORD OD 7947 (Weapon Equipment List)



MSC 289 Class Data

L.O.A.	145'
Beam	27'
Draft	13' (full load)
Displ.	378 Ton (full load)
Drive	Diesel (1000 hp)
Hull Mat	Wood
Complement	45
Cruising Rad	2600 nm at 11.5 kn. 3600 nm at 9.5 kn.
Max Speed	13 kn (load)
Pers Transp Cap	
Cargo Transp Cap	



MINESWEEPERS, COASTAL (MSC 289 Class)

Mission (Tasks):

To sweep sea mines.

Armament:

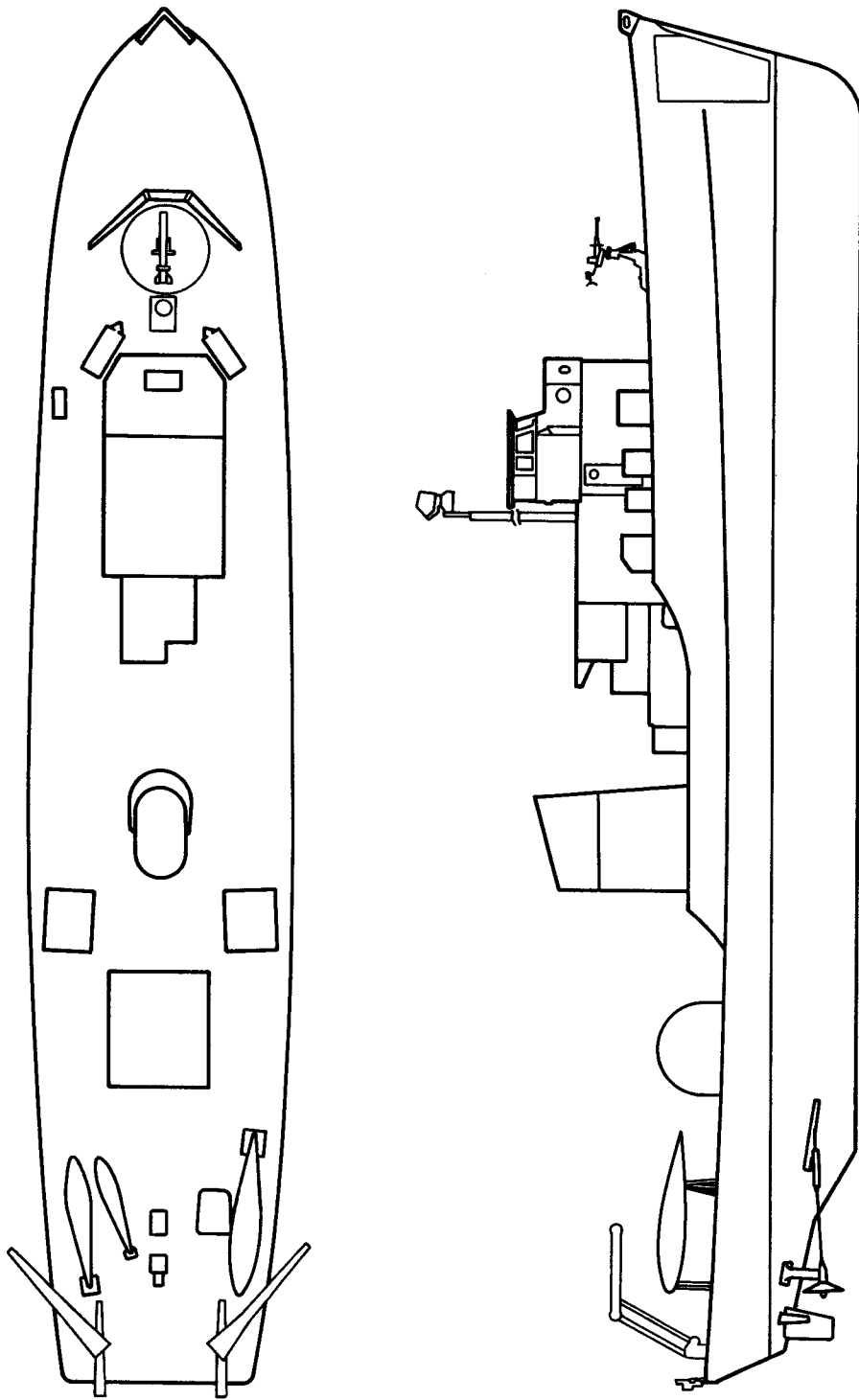
1 - Mount, Mach. Gun (Twin 20MM Mk 4 Mod 1) Mk 24 Mod 6

Status:

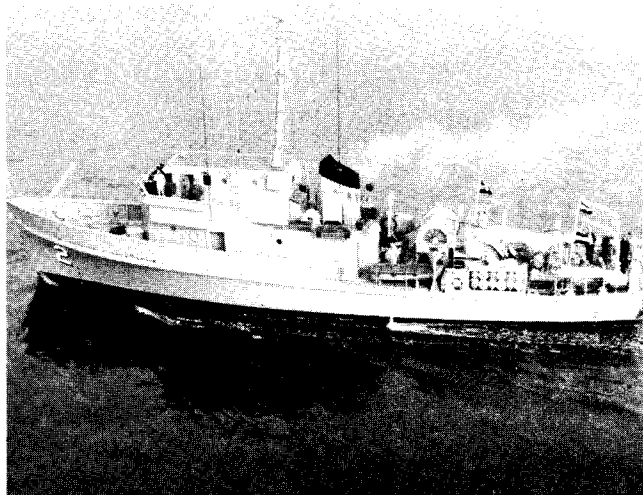
Remarks:

Reference:

NAVORD OD 7947 (Weapon Equipment List)







MSI-1 Data

L.O.A.	111'
Beam	24.5'
Draft	10' (full load)
Displ.	249 Ton (full load)
Drive	Diesel (2) (325 hp ea)
Hull Mat	Wood
Complement	21
Cruising Rad	1200 nm at 12 kn. 3500 nm at 8 kn.
Max Speed	12 kn. (full load)
Pers Transp Cap	
Cargo Transp Cap	

MINESWEEPERS, INSHORE (MSI-1)

Mission (Tasks):

To sweep moored, magnetic, and acoustic mines.

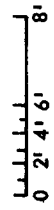
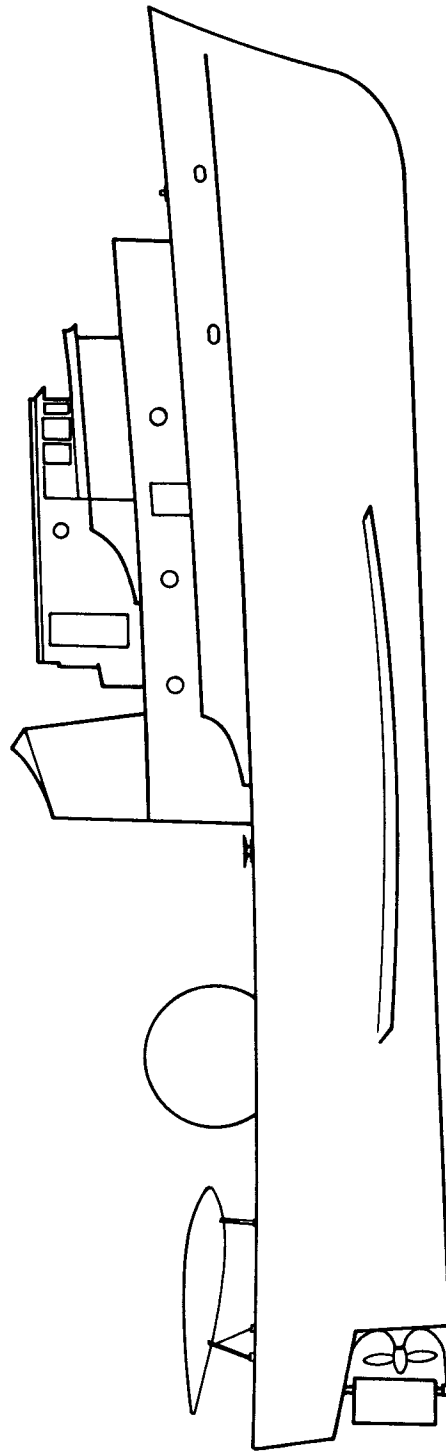
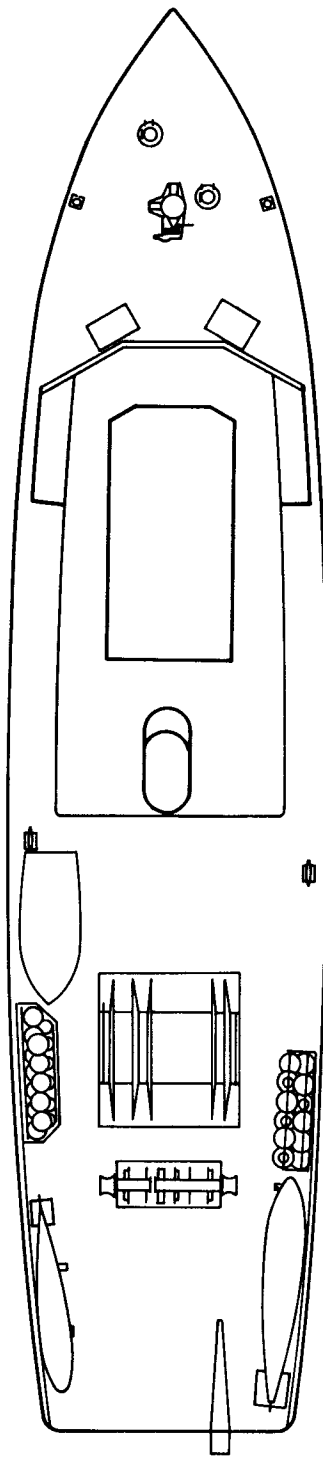
Armament:

A Weapon Equipment List has not been promulgated by the Naval Ordnance Systems Command for MSI-1. However, the following armament has been selected for this craft:

1 - Mount, Mach. Gun (.50 Cal. M2)  
(Mounted gun is removed when minesweeping magnetic mines.)

Status:

Remarks:



CHAPTER 3  
PATROL BOATS

This chapter describes specifically designated patrol boats, and other craft primarily seen as being used in a patrol function. Consequently, the ASPB and the PCH are carried in other chapters, while the PCF, PG, and PGM have been included.



PBR Mk 1 Data

L.O.A.	31'
Beam	10.5'
Draft	2.5' (full load)
Displ.	14,500 lb. (full load)
Drive	Diesel (2) (220 hp ea)
Hull Mat	Plastic
Complement	4
Cruising Rad	150 nm at 25 kn.
Max Speed	25 kn. (full load)
Pers Transp Cap	
Cargo Transp Cap	

RIVER PATROL BOAT (PBR) Mk 1

Mission (Tasks):

To operate offensively on patrols in rivers and restricted waterways.

Armament:

- 1 - Mount, Mach. Gun (Twin .50 Cal. M2, HB) Mk 36 Mod 0
- \*1 - Mount, Mach. Gun (.50 Cal. M2, HB and 40MM Gren. Mk 18 Mod 0)  
Mk 46 Mod 0
- \*1 - Mount, Mortar (60MM) Mk 4 Mod 0 is interchangeable  
with aft machine gun at option of operational commander.

Status:

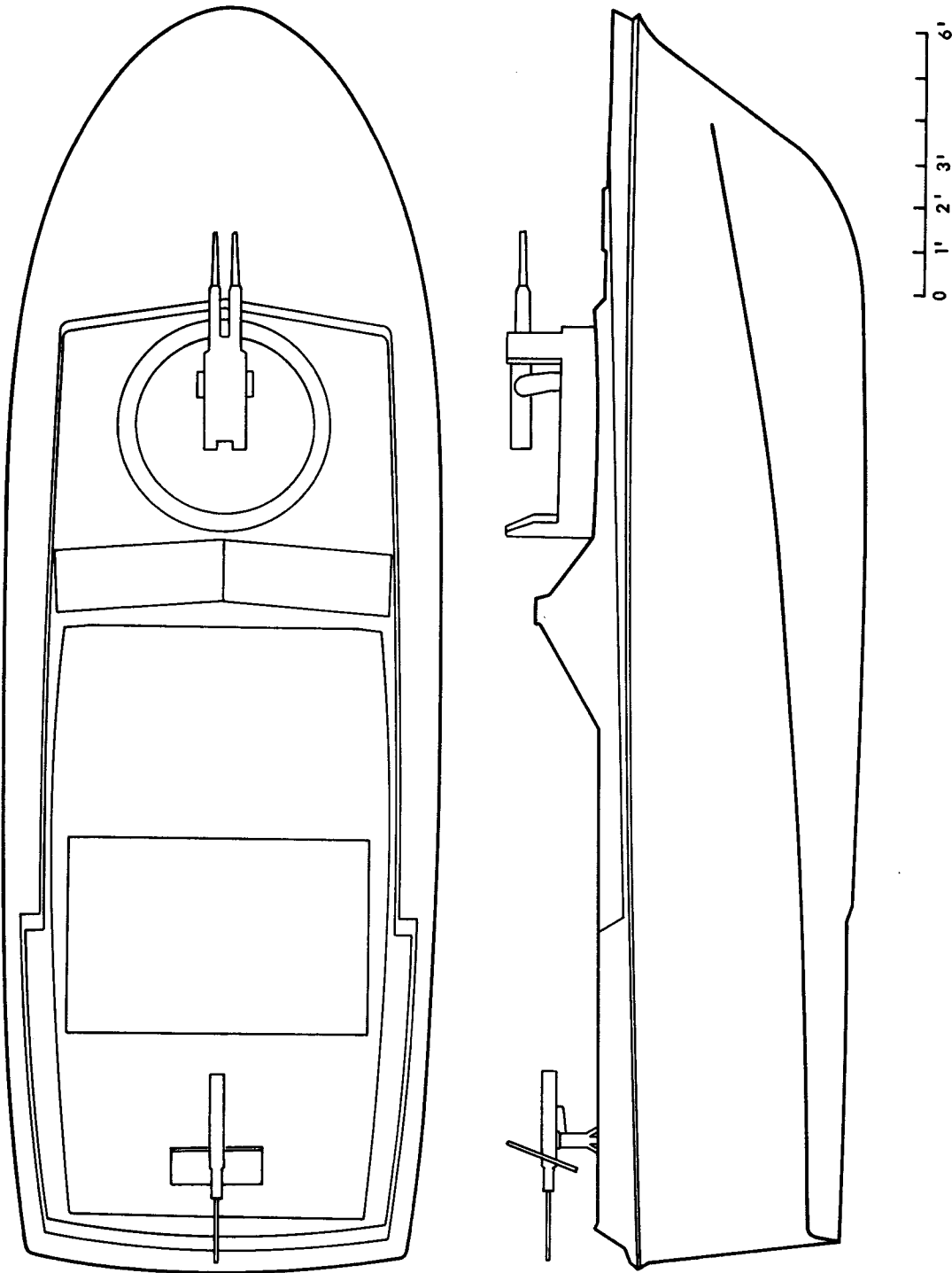
Remarks:

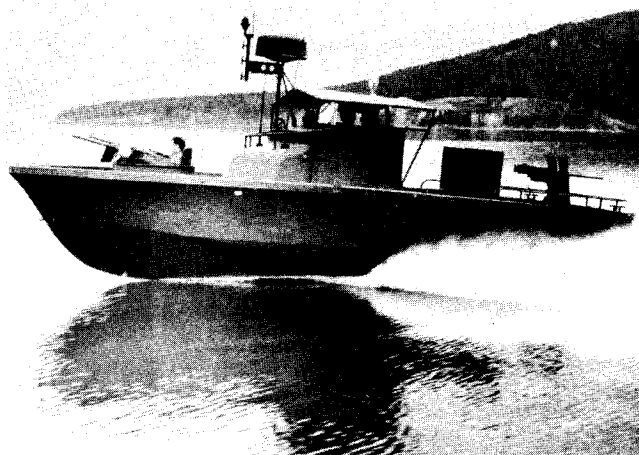
Armor:

.30 Cal. AP armor at forward and after guns, coxswain and radio operator's positions.

Reference:

NAVORD OD 40238 (Weapon Equipment List) (4-21-67)





PBR Mk 2 Data

L.O.A.	31'
Beam	11.5'
Draft	1.9' (full load)
Displ.	16,200 lb. (full load)
Drive	Diesel (2) (205 hp ea)
Hull Mat	Plastic
Complement	4
Cruising Rad	150 nm at 25 kn.
Max Speed	25 kn. (full load)
Pers Transp Cap	
Cargo Transp Cap	

RIVER PATROL BOAT (PBR) Mk 2

Mission (Tasks):

To operate offensively on patrols in rivers and restricted waterways.

Armament:

- 1 - Mount, Univ. Gun (Twin .50 Cal. M2, HB) Mk 56 Mod 0
- \*1 - Mount, Mach. Gun (.50 Cal. M2, HB and 40MM Gren. Mk 18 Mod 0) Mk 46 Mod 1
- \*1 - Mount, Mortar (60MM) Mk 4 Mod 0 is interchangeable with aft machine gun at option of operational commander.

Status:

Remarks:

80 hulls are being put in service (11-7-67)

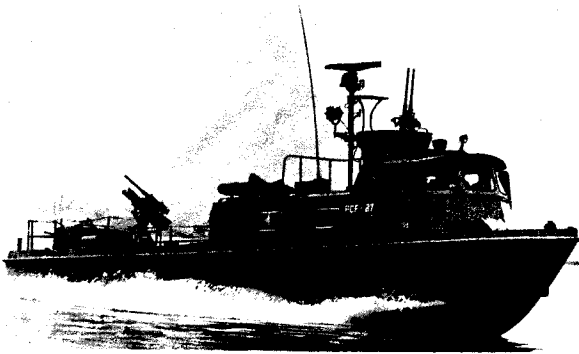
Armor:

Against .30 Cal. AP for helmsman and radar operator; splinter shields for gunners.

Reference:

NAVORD OD 40238 (Weapon Equipment List) 4-21-67

Deck and profile drawings of the  
PBR Mk 2 will be supplied in a  
subsequent revision of this publication.



PCF Mk 1 Data

L.O.A.	50'
Beam	13'
Draft	5' (full load)
Displ.	44,000 lb. (full load)
Drive	Diesel (2) (430 hp ea)
Hull Mat	Aluminum
Complement	6
Cruising Rad	400 nm at 29 kn.
Max Speed	27 kn. (full load)
Pers Transp Cap	
Cargo Transp Cap	

PATROL LAUNCH (SWIFT) (PCF) Mk 1

Mission (Tasks):

To operate offensively on patrols in coastal and restricted waterways.

Armament:

- 1 - Mount, Mach. Gun (Twin .50 Cal. M2, HB) Mk 17 Mod 5
- 1 - Mount, Mortar (81MM Mk 1 Mod 0 and .50 Cal. M2, HB) Mk 2 Mod 0

Status:

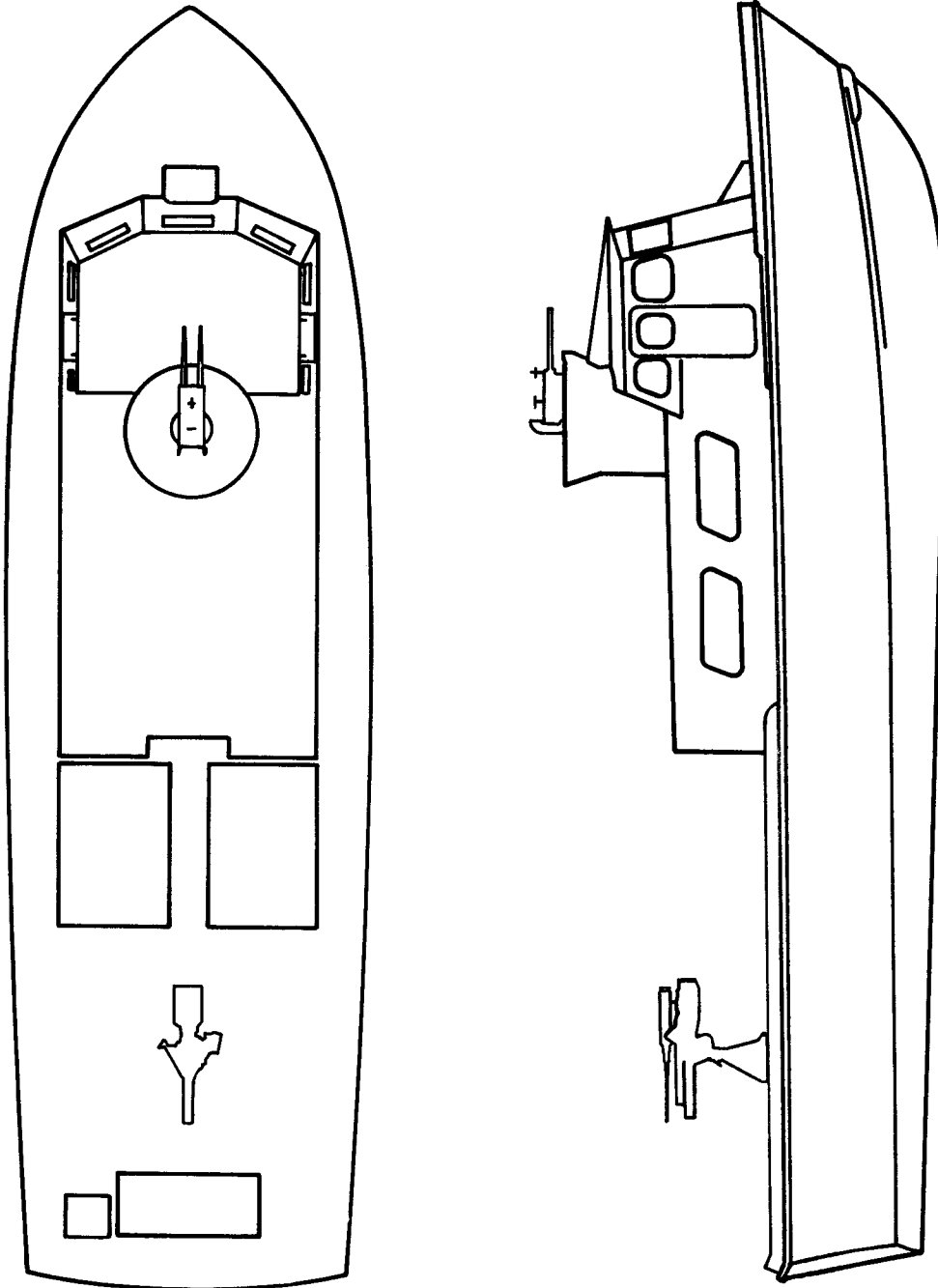
Remarks:

84 in service in SEA.

Reference:

NAVORD OD 40830 (Weapon Equipment List)





PGM (F-PGM-71 Class) Data

L.O.A.	101'
Beam	21'
Draft	7.5' (full load)
Displ.	143 Ton (full load)
Drive	Diesel (2 Quads)
Hull Mat	Steel, Aluminum Deckhouse
Complement	15
Endurance	500 nm
Max Speed	15 kn. (full load)
Pers Transp Cap	15 men (or)
Cargo Transp Cap	15 tons



MOTOR GUNBOAT (F) PGM

Mission (Tasks):

To carry out blockade and surveillance operations in shallow coastal waters, harbors, and rivers.

Armament:

PGM 71-83, 91, 102-107

1 - Mount, 40MM AA (Gun - M1) Mk 3 Mod 0

2 - Mount, Mach. Gun (Twin 20MM Mk 4 Mod 1) Mk 24 Mod 6

2 - Mount, Mach. Gun (.50 Cal. M2, HB) Mk 26 Mod 5

In addition to above armament, PGM 104-106 equipped with  
72 - 7.2" Rockets, (Hedge hog) (Head Mk 5 and Motor Mk 3) also

8 - Depth Charges ( Case Mk 9 Mod 4 and Pistol Mk 6 Mod 2)

PGM 113-117

1 - Mount, Mortar (81MM Mk 1 Mod 0) Mk 2 Mod 0

1 - Mount, 40MM AA (Gun - M1) Mk 3 Mod 0

1 - Mount, Mach. Gun (Twin 20MM Mk 4 Mod 1) Mk 24 Mod 6

2 - Mount, Mach. Gun (.50 Cal. M2, HB) Mk 26 Mod 5

Status:

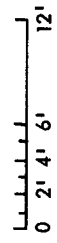
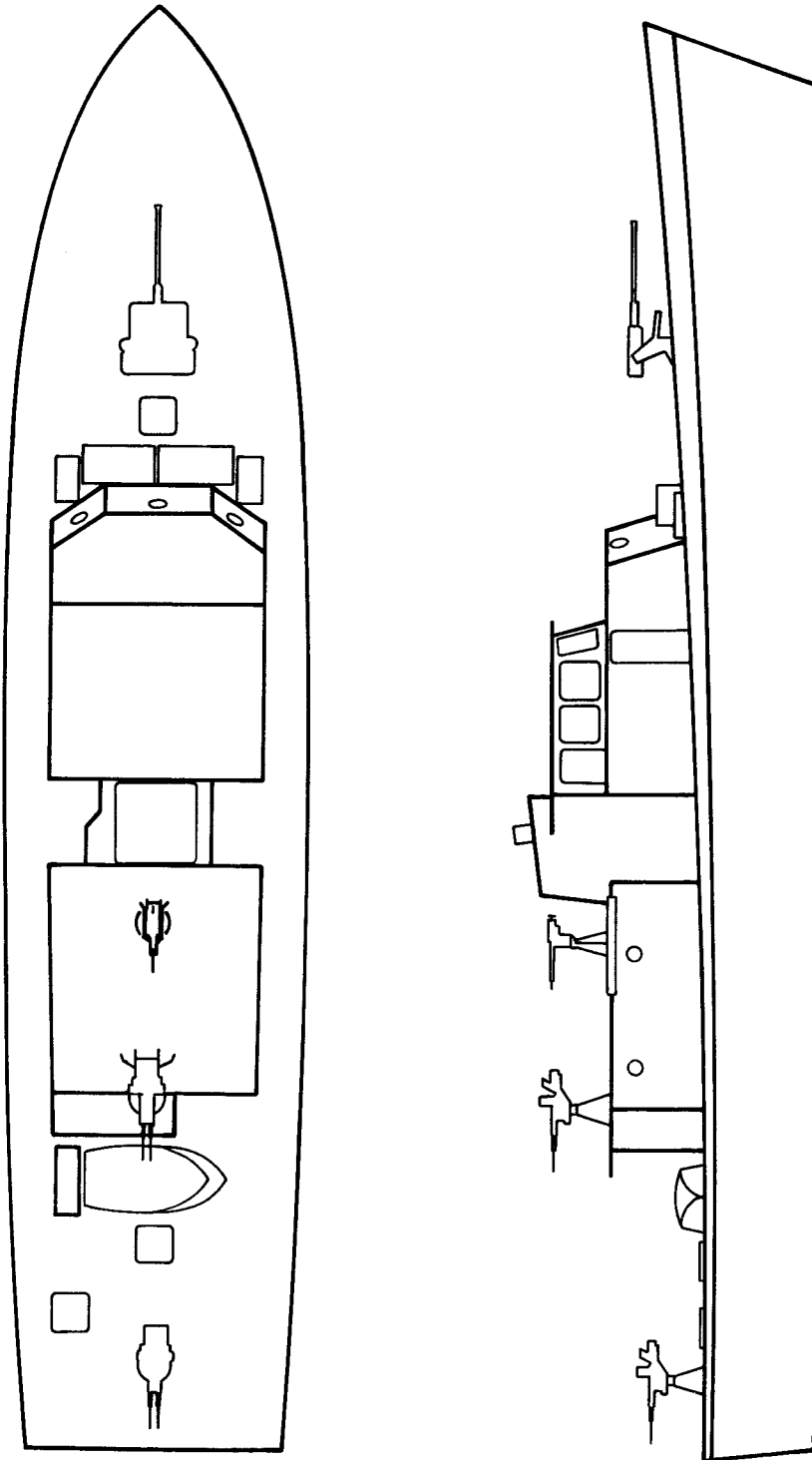
Remarks:

Delivered as of Feb. '68: F-PGM 71-83, 91, 102-107

Under construction as of Feb. '68: F-PGM 112-117

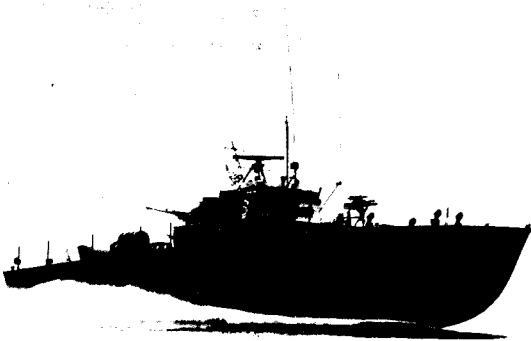
Reference:

NAVORD OD's 28769 and 40930 (Weapon Equipment List)



PTF Data

L.O.A.	80.3'
Beam	24.7'
Draft	3.8' to keel 7.2' to prop tip (full load)
Displ.	81 ton (full load)
Drive	Diesel (2) (3100 hp ea)
Hull Mat	Wood
Complement	18
Cruising Rad	860 nm at 38 kn. 1050 nm at 20 kn.
Max Speed	42 kn. (full load)
Pers Transp Cap	
Cargo Transp Cap	



FAST PATROL BOAT (PTF)

Mission (Tasks):

To operate offensively, primarily as escort or patrol in waters other than the high seas.

Armament:

1 - Mount, 40MM AA (Gun - M1) Mk 3 Mod 0  
2 - Mount, Mach. Gun (20MM Mk 4) Mk 10 Mod 25  
1 - Mount, Mortar (81MM Mk 1 Mod 0 and .50 Cal. M2, HB) Mk 2 Mod 0  
Weight and space are reserved for REDEYE Missiles on all hulls.  
In addition to above armament, PTF 17-26 equipped with  
2- Mount, Mach. Gun (7.62MM M60) Mk 58 Mod 1

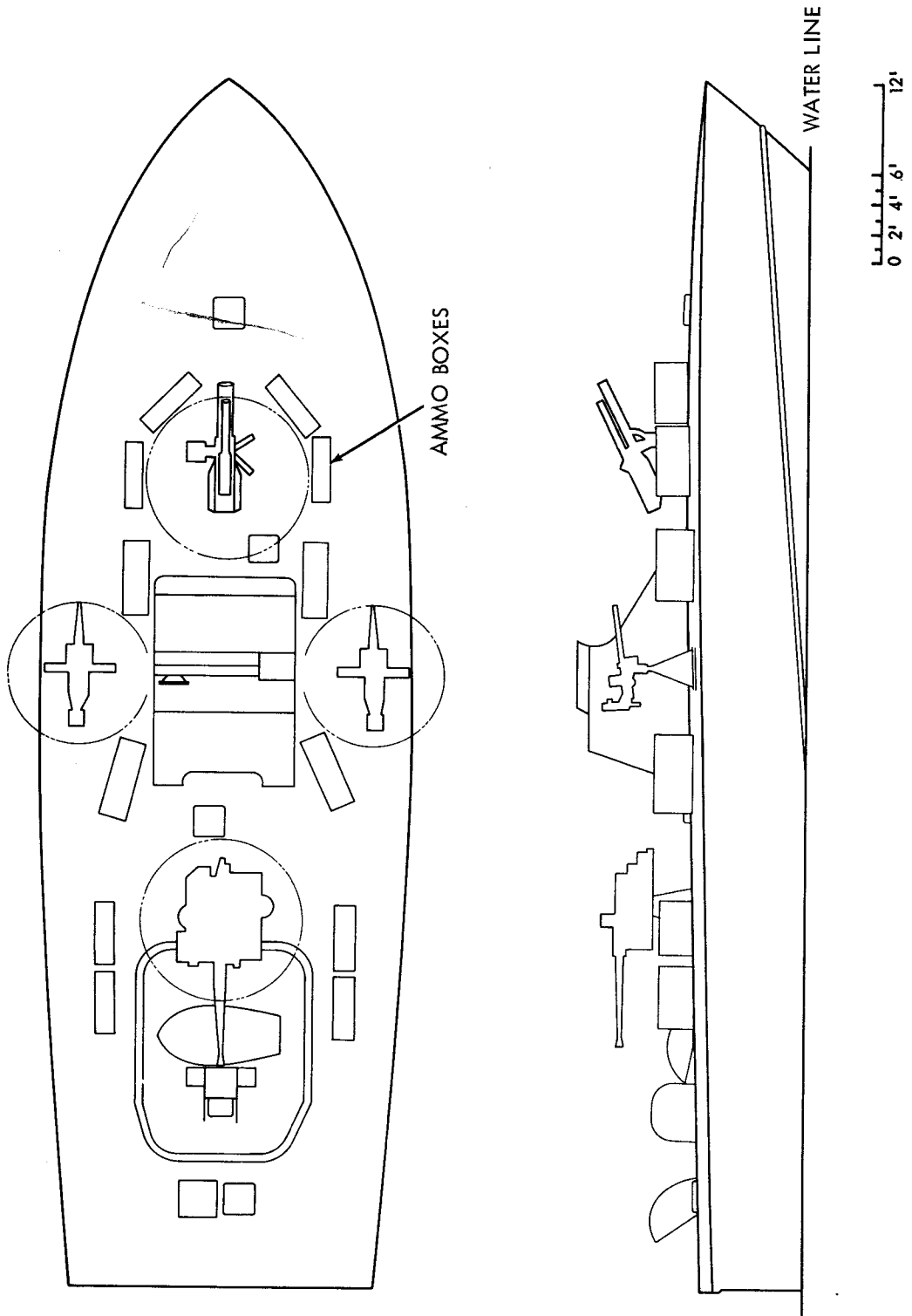
Status:

In service as of Dec. '67: PTF 3, 5, 6, 7, 10, 11, 12 and 13  
Under construction as of Dec. '67: PTF 17-26

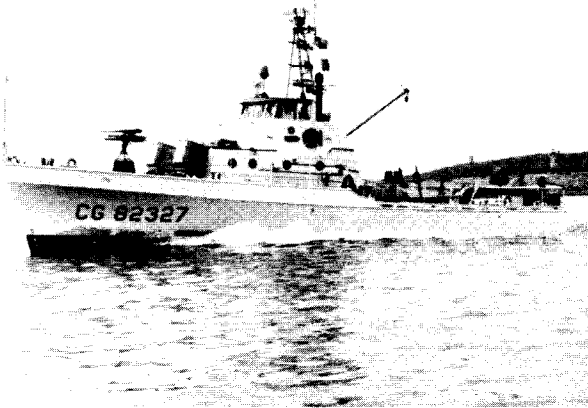
Remarks:

Reference:

NAVORD OD 40527 (Weapon Equipment List)



CONFIDENTIAL  
NOLTR 66-25



WPB Data

L.O.A.	82'
Beam	17'
Draft	6' ( load)
Displ.	65 Ton ( load)
Drive	Diesel (2) (1200 hp)
Hull Mat	Steel
Complement	10
Cruising Rad	900 nm at 12 kn.
Max Speed	A&B Classes - 17 kn. C Class - 23 kn. ( load)
Pers Transp Cap	
Cargo Transp Cap	

COAST GUARD PATROL BOAT (WPB)

Mission (Tasks):

Coastal patrol to counter sea infiltration and to cover enemy distribution of men and supplies by use of coastal waters.

Armament:

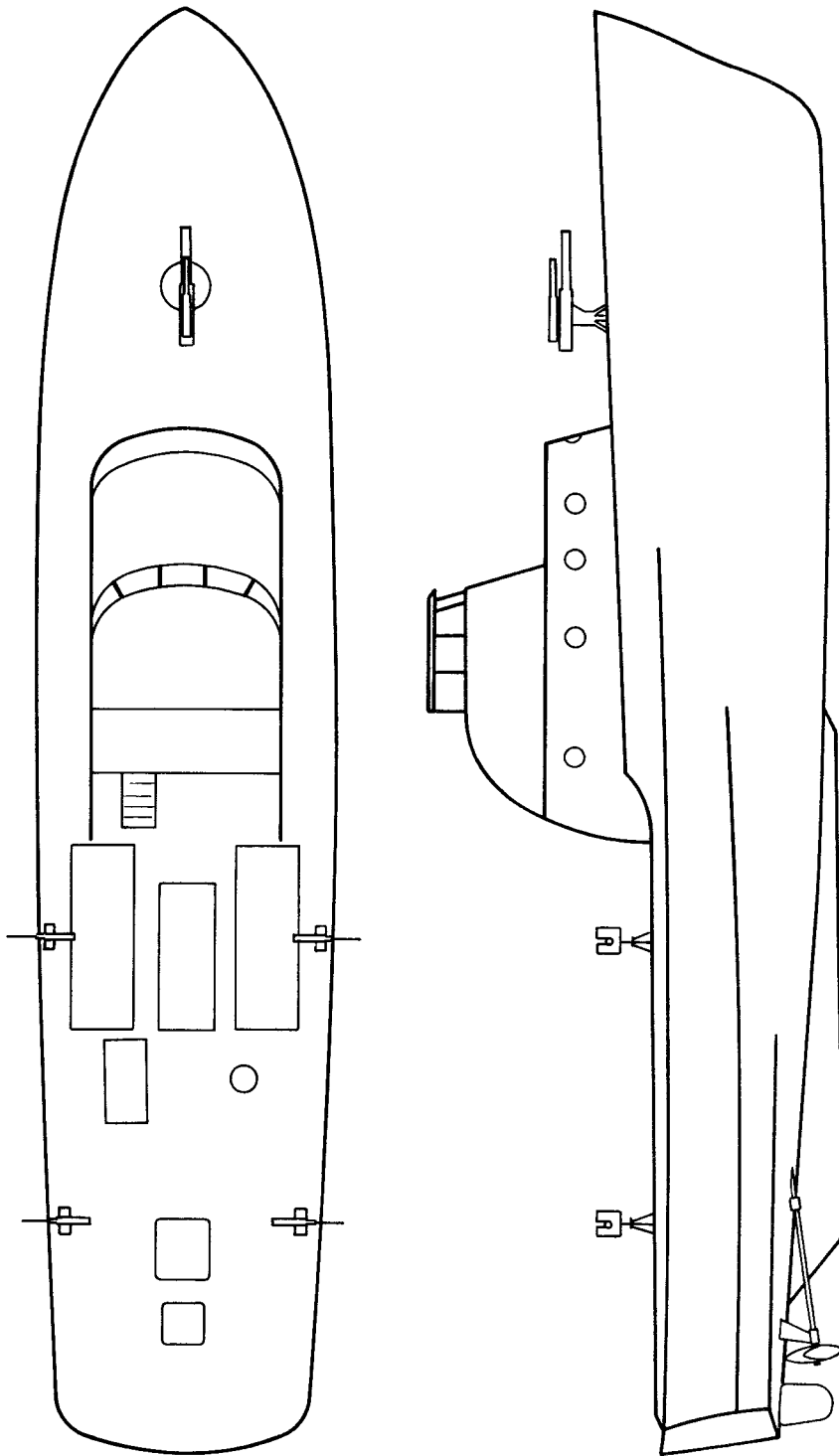
A Weapon Equipment List has not been promulgated by the Naval Ordnance Systems Command for WPB. However, the following armament has been selected for this craft as modified for riverine or inshore warfare.

- 1 - Mount, Mortar (81MM Mk 1 Mod 0 and .50 Cal. M2, HB) Mk 2 Mod 1
- 4 - Mount, Mach. Gun (.50 Cal. M2, HB) Mk 26 Mod 4

Status:

Remarks:

- A Class consisted of 17 hulls.
- B Class consisted of 14 hulls.
- C Class consisted of 10 hulls.



0 2' 4' 6' 12'